



# Nup88 Polyclonal Antibody

<b>Catalog No</b>	YP-Ab-00760
<b>Isotype</b>	IgG
<b>Reactivity</b>	Human;Mouse
<b>Applications</b>	WB;ELISA
<b>Gene Name</b>	NUP88
<b>Protein Name</b>	Nuclear pore complex protein Nup88
<b>Immunogen</b>	Synthesized peptide derived from Nup88 . at AA range: 330-410
<b>Specificity</b>	Nup88 Polyclonal Antibody detects endogenous levels of Nup88 protein.
<b>Formulation</b>	Liquid in PBS containing 50% glycerol, 0.5% BSA and 0.02% sodium azide.
<b>Source</b>	Polyclonal, Rabbit,IgG
<b>Purification</b>	The antibody was affinity-purified from rabbit antiserum by affinity-chromatography using epitope-specific immunogen.
<b>Dilution</b>	Western Blot: 1/500 - 1/2000. ELISA: 1/20000. Not yet tested in other applications.
<b>Concentration</b>	1 mg/ml
<b>Purity</b>	≥90%
<b>Storage Stability</b>	-20°C/1 year
<b>Synonyms</b>	NUP88; Nuclear pore complex protein Nup88; 88 kDa nucleoporin; Nucleoporin Nup88
<b>Observed Band</b>	83kD
<b>Cell Pathway</b>	Nucleus, nuclear pore complex .
<b>Tissue Specificity</b>	Ubiquitous.
<b>Function</b>	function:Essential component of nuclear pore complex.,PTM:Phosphorylated upon DNA damage, probably by ATM or ATR.,subunit:Interacts with NUP214/CAN.,tissue specificity:Ubiquitous.,
<b>Background</b>	The nuclear pore complex is a massive structure that extends across the nuclear envelope, forming a gateway that regulates the flow of macromolecules between the nucleus and the cytoplasm. Nucleoporins, a family of 50 to 100 proteins, are the main components of the nuclear pore complex in eukaryotic cells. The protein encoded by this gene belongs to the nucleoporin family and is associated with the oncogenic nucleoporin CAN/Nup214 in a dynamic subcomplex. This protein is also overexpressed in a large number of malignant neoplasms and precancerous dysplasias. Alternative splicing results in multiple transcript variants encoding different isoforms. [provided by RefSeq, Mar 2016],



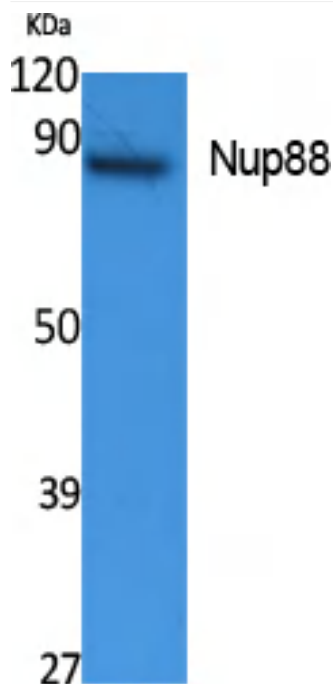
**matters needing attention**

Avoid repeated freezing and thawing!

**Usage suggestions**

This product can be used in immunological reaction related experiments. For more information, please consult technical personnel.

**Products Images**



Western Blot analysis of extracts from K562 cells, using Nup88 Polyclonal Antibody. Secondary antibody(catalog#:RS0002) was diluted at 1:20000